

**A leader in the design and manufacturing of Conveyor System's and Material Handling Equipment's.**



**Powermech Engineering Systems**  
**Material Handling Equipment's And Systems**

***" A Perfect Solution For All Your Needs "***

**Powermech Engineering systems providing unique and Customized Material Handling solutions.**

# **Range of Unique Products**

- ☐ **Bucket Elevators**
- ☐ **Screw Conveyors**
- ☐ **Belt Conveyors**
- ☐ **Drag Chain Conveyors & Feeders**
- ☐ **Wet Scraper Conveyors**
- ☐ **Motorized Diverter Gates**
- ☐ **Slide Gates**
- ☐ **Coal Handling Plants**
- ☐ **Ash handling Plants**
- ☐ **Hoppers**
- ☐ **Pressure Vessels**
- ☐ **Heavy Structural Fabrication**

- 
- ❑ **Bag And Box Handling Systems**
  - ❑ **Truck Loading Unloading Systems**
  - ❑ **Bag Stacking Conveyor**
  - ❑ **Portable Conveyors**
  - ❑ **All Customized Material Handling Solutions .**

# Bucket Elevators .



- Used To Transfer Material In Vertical Direction .
- Designed Manufactured AND Supplied Elevators For Coal, Cement , Powder , Fertilizers & Grains Handling .
- Supplied Chains And Belt Type Elevators Up to 60 Meters Of Length & 100 TPH Capacity.
- Special Projects & Design Team .

# Screw Conveyors



- Used To Transfer Powder Material In Inclined Horizontal & Vertical Direction .
- Designed And Supplied Screw Conveyors In Coal, Cement , Foods , Grains Etc Sectors .
- Rigid & High Capacity Designs .
- Easy Material Transportation



# Belt Conveyors



- Manufacturers Of belt Conveyors For Cement ,Iron Ore, Coal , Powders , Grains ,Fertilizers Etc .
- Supplied Up To 100 Meters .
- Capable Project Team For Such Of Projects .

# Drag Chain Conveyors



- Manufacturers Of Drag Chain Conveyors For Handling Cement , Coal, Powders , Grains Fertilizers Etc .
- Available in Single & Double Strand Sprockets Models Width Up To 1300mm .
- Designed And Supplied Up To 150 TPH Capacity .

# Wet Scrapper Conveyors



- Manufacturers Of Wet Scraper Conveyors For, Steel Industry , Power Sector & Chemical Sectors .
- Using Forged Chains , Forged Sprockets , Cast Basalt Liners At Bottom Side & Totally Enclosed Fully Welded Leak Proof Design .
- Supplied Lengths Up To 20 Meters & Capacity Up To 50 Tph. .



# Motorized Diverter Gates



➤ Manufactured and Supplied Motorized Diverter Gates For, Steel Industry , Power Sector & Mining .

➤ Diverter Gate Offers High Operating Efficiency & Long Life. Leakage Proof Design With Close Tolerance And Liners .



➤ Supplied Opening Size Up To 2000mm \* 2000 mm For 1000 TPH Systems .

# Slide Gates

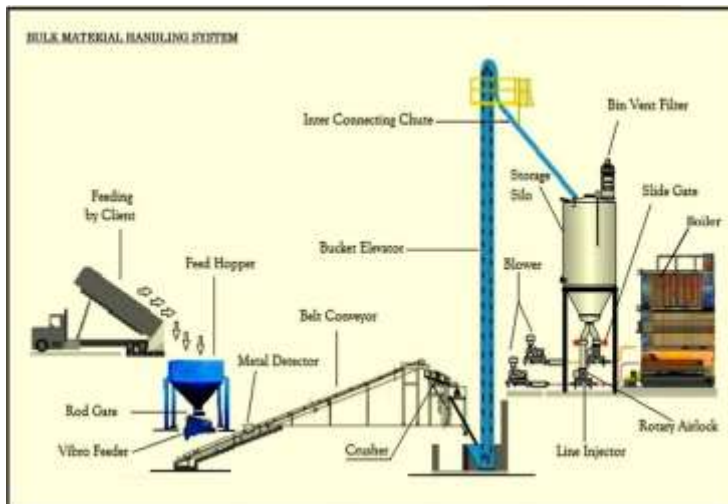


- Manufactured and Supplied Motorized & Manual Slide Gates For, Steel Industry , Power Sector & Mining .
- Side Gate Offers High Operating Efficiency & Long Life. Leakage Proof Design With Close Tolerance
- Supplied Opening Size Up To 2000mm \* 2000 mm For 1000 TPH Systems .

# Coal & Ash Handling Systems



- Design, Manufactured & Supplied Complete Coal & Ash Handling Systems For Industries Like Steel Industry , Power Sector & Chemical .
- Capable Design And Execution Team .



- Supplied Coal Handling Systems Up To 100 TPH , Boilers .



# Bag & Box Handling Systems



- Providing Complete Solution In Bag And Box Handling .
- These Systems Helps In saving time , Labors Ultimately Helps In Boosting Profit And Productivity .
- Our Team will Analyze Clients Requirement To save Time And Labors Then Suggest Best Solution .



# Truck Loading/Unloading Conveyors



- Available In Hydraulic And Non Hydraulic Type .
- Single Unit Used In Truck Loading Unloading Both Activity .
- Light In Weight , Easily Movable High Material Carrying Capacity .
- Saves Time , Labors In Truck Loading Unloading Activity .
- Customization As per Clients Requirement .

# Bag Stacking Conveyors



- Special Hydraulic Unit Designed For Stacking And De-Stacking .
- Light In Weight Easily Movable And Higher Weight Carrying Capacity Due To Its Square Tubes Structure .
- Height Adjusted By Hydraulic Unit By Pressing Single Button .
- Suitable For Saving Time, Labors & Space .

# Portable Flat Belt Conveyor



- Special Design Light In Weight , Easily Movable More Weight Carrying Capacity Due To Its Square Structure Design
- Specially Used In Bag & Box Transfer Activity . To Save Labors , Time And Labors Fatigue .
- Customized In Size And Structure As per Client Requirement To Increase Profit And Productivity .



# Heavy Fabrication Service





# Photo Gallery





















## Industrial Trolleys



# Our Esteemed Clientele



Be surprised!





# Our Esteemed Clientele



AND MANY MORE .....

# Why Us?

Our company is acknowledged as the foremost company in providing supreme quality conveyors the main intent of our organization is to present a wide array of premium quality products, Therefore, we ensure their flawless performance and deliver them in a stipulated time frame

**Timely services**

**Excellent after sales services**

**Quality range**

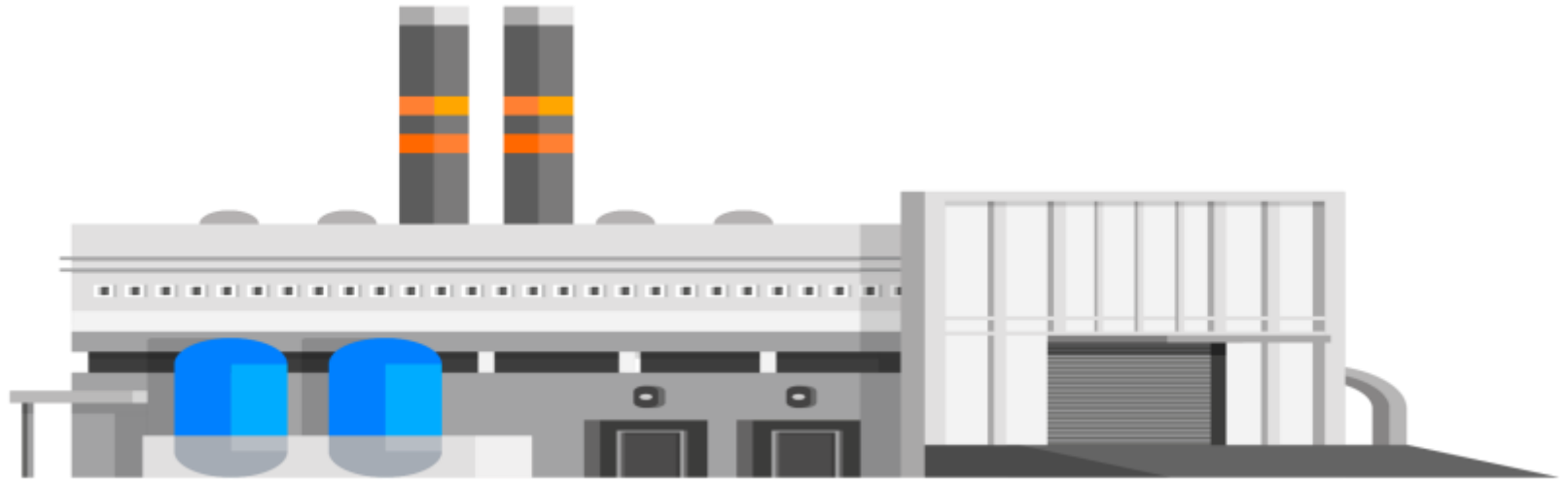
**Customization**



## Team

We are equipped with experienced, committed and adept team members who help us in offering premium quality products to our valued customers. Our professionals work in close coordination with each other to meet the specific requirements of our client.

# Infrastructure



We are equipped with spacious infrastructure Of 8000 Sq Feet Total Factory At Chikhali ,Pune . Including all the latest facilities with machineries. Our range of conveyors and material handling equipments are tested on various parameters ensuring their accordance with the global standards.

The dedicated team of Peoples From Background of Project Management , Heavy Fabrication , Onsite Erection .

Working From 2018 , Providing sustainable Solutions & Problem Solving Solutions To Various Clients In Different Industry.



**“ We believe in Customer Satisfaction ”**  
**So tell us your challenges and we will develop a  
solution for you.**

# **Powermech Engineering Systems**

## **Material Handling Equipment**

---

Sr no 1335, Sonwane Wasti Road ,  
Near Vikas Anath Ashram , Talwade , Pune.  
Pincode – 411 062 (Maharashtra India)

---

**Call : 8668695159 (Sales)**  
**9284933200 (sales)**

Web Site : <https://www.indiamart.com/powermechengineeringsystems/>

Email Id : [salespowermech01@gmail.com](mailto:salespowermech01@gmail.com)    [powermechengg2018@gmail.com](mailto:powermechengg2018@gmail.com)